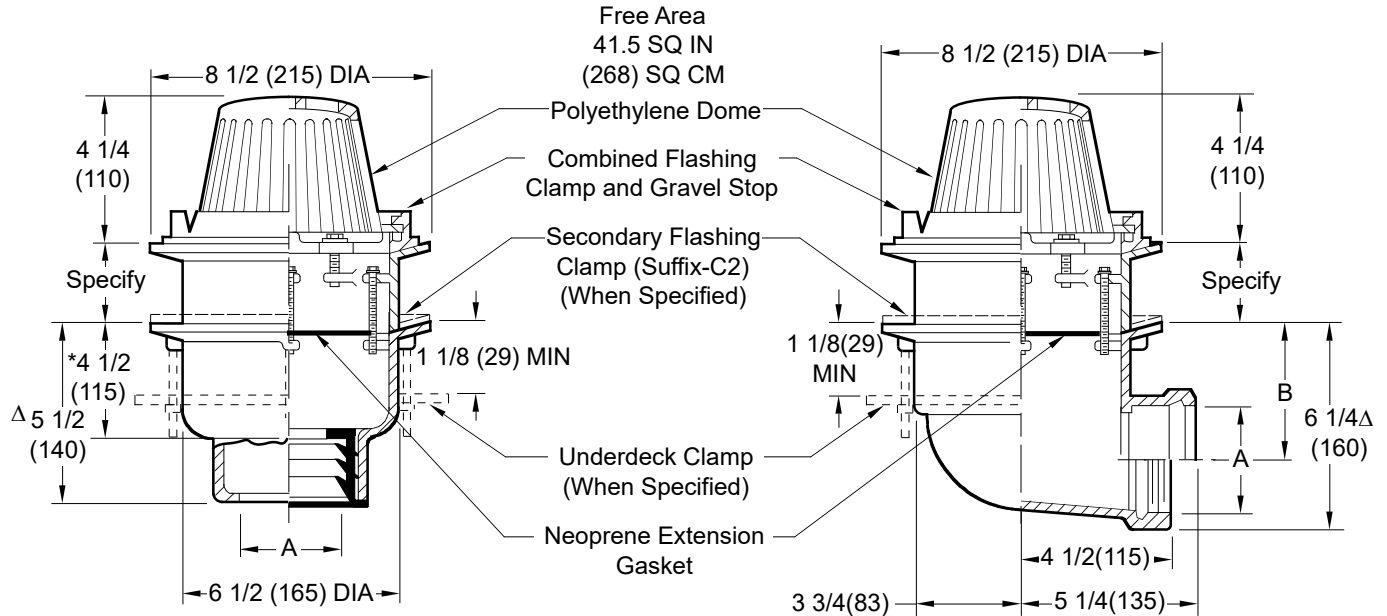


GENERAL PURPOSE ROOF DRAINS WITH EXTENSIONS

8 1/2" (215) DIAMETER - LOW PROFILE DOME



- Fig. 1330C (-E) CAULK OUTLET
- Fig. 1330Y (-E) NO-HUB OUTLET
- Fig. 1330T (-E) THREADED OUTLET

*This Dimension to Internal Stop of Speedi-Set Gasket.
 Δ Same for Caulk, NO-HUB and Speedi-Set, 4 1/4(110) for Threaded.

- Fig. 1340C (-E) CAULK OUTLET
- Fig. 1340T (-E) THREADED OUTLET

A (Pipe Size) = 02(50), 03(75) or 04(100)
 recommended deck opening

with suffix -R	9 (230) DIA
less suffix -R	7 3/4 (195) DIA

NOTE: Dimensions shown in parentheses are in millimeters.

A SIZE	02 (50)	03 (75)	04 (100)
B	4 1/2 (115)	4 (100)	3 1/2 (89)

REGULARLY FURNISHED:

Duco Cast Iron Body and Extension with Combined Flashing Clamp and Gravel Stop with Polyethylene Dome.

VARIATIONS:

- Expansion Joint (Specify Fig. 1710) (Fig. 1330 only)
- L Speedi-Set Service Weight (Fig. 1330 only)
- LXH Speedi-Set Extra Heavy (Fig. 1330 only)
- Secondary Flashing Clamp -C2
- Sump Receiver -R
- Underdeck Clamp -C
- Vandal Proof Dome -U
- Roof Deck Plate -RDP

OPTIONAL MATERIALS:

- Aluminum Dome -AD
- Cast Iron Dome -CID
- Galvanized Cast Iron -G
- Rough Bronze Dome -RBD

Extension height should be specified 1/2" (6) less than insulation thickness. This permits roofing material to be sloped to drain, thus preventing puddling around drain. Specify secondary flashing clamp when drain is to be flashed at flange below insulation.

DRAWING NUMBER S1330 (-E), 1340 (-E)
 SCALE: NONE
 DATE: 8-6-70
 APPROVED BY: CR
 CHECKED BY: BH
 DRAWN BY: JLS
 DIMENSIONS ARE SUBJECT TO MANUFACTURERS TOLERANCE AND CHANGE WITHOUT NOTICE

REV.	DATE	DESCRIPTION	BY	CKD. BY	WEIGHT POUNDS	VOLUME CUBIC FEET	FIGURE NUMBER
	3-25-24 10-30-23 7-21-21 5-14-96	Revised Variations, Fig. Opt. Removed Function Changed (80) to (75) Submittal Update	HS HS KK EMB	CL CL CL BS			1330 (-E), 1340 (-E)